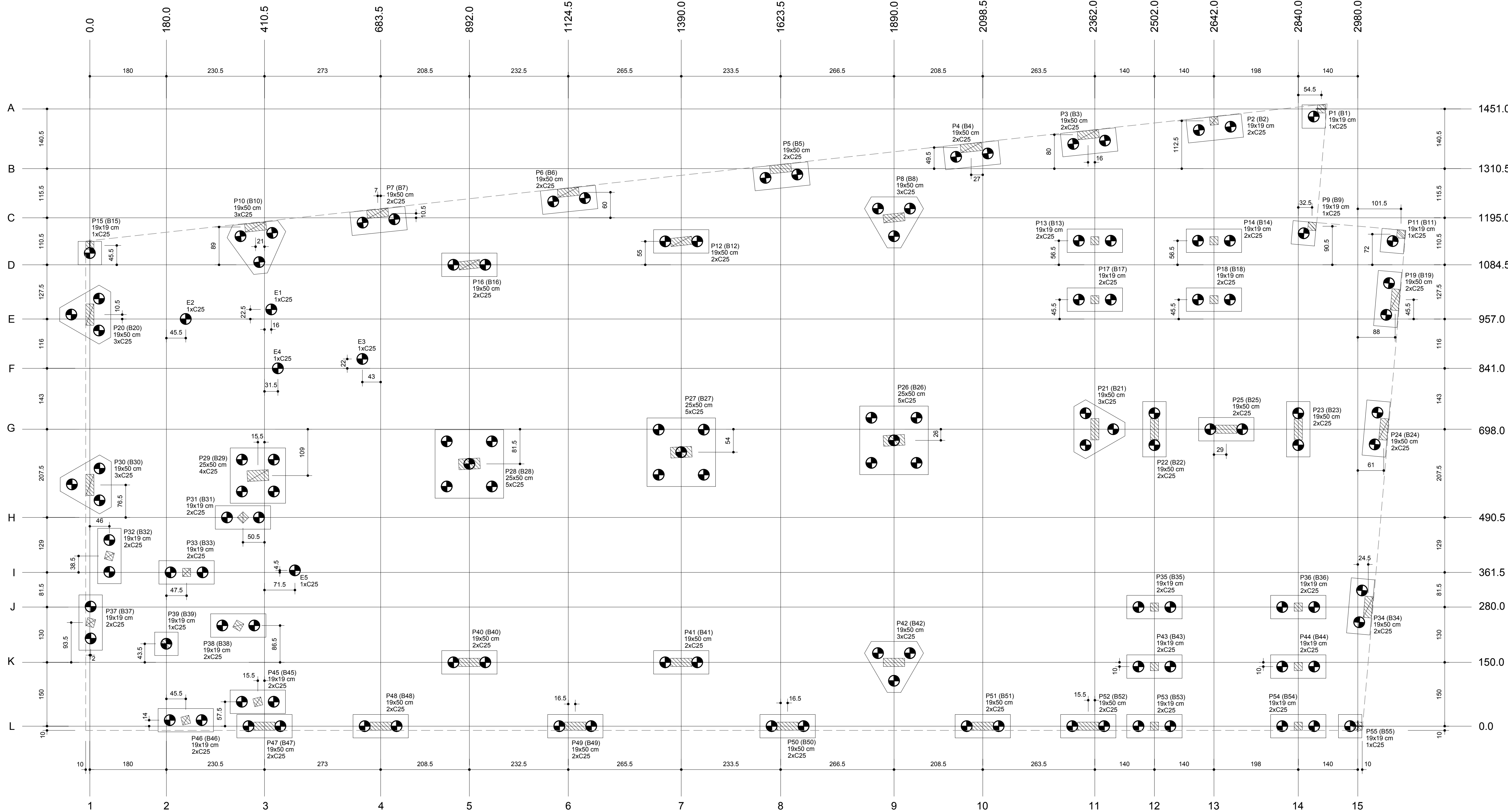


8
7
6
5
4
3
2
1
0



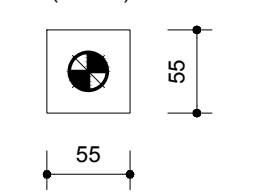
Planta de locação
escala 1:50

Pilar					Fundação					Blocos	
Nome	Seção	X (cm)	Y (cm)	Carga Max (tf)	Nome	Lado B (cm)	Lado H (cm)	H0 / ha	H1 / hb	ne	Estaca ca (cm)
E1	-	426.5	978.5	5	E1	-	-	-	-	1	C25 0
E2	-	225.5	957.0	5	E2	-	-	-	-	1	C25 0
E3	-	640.5	963.0	5	E3	-	-	-	-	1	C25 0
E4	-	426.5	941.0	5	E4	-	-	-	-	1	C25 0
E5	-	482.0	966.0	5	E5	-	-	-	-	1	C25 0
P1	19x19	2884.5	1451.0	20	B1	55	55	0	60	1	C25 -50
P2	19x19	2642.0	1423.0	25	B2	130	55	0	60	2	C25 -50
P3	19x50	2346.0	1396.0	25	B3	130	55	0	60	2	C25 -50
P4	19x50	2071.4	1380.0	25	B4	130	55	0	60	2	C25 -50
P5	19x50	1823.5	1310.0	30	B5	130	55	0	60	2	C25 -50
P6	19x50	1124.5	1255.0	30	B6	130	55	0	60	2	C25 -50
P7	19x50	676.5	1205.4	35	B7	130	55	0	60	2	C25 -50
P8	19x50	189.0	1165.0	35	B8	130	55	0	60	2	C25 -50
P9	19x19	2872.5	1175.0	30	B9	55	55	0	60	1	C25 -50
P10	19x50	389.5	1173.4	60	B10	130	120	0	60	3	C25 -50
P11	19x19	301.5	1156.5	20	B11	55	55	0	60	1	C25 -50
P12	19x50	1360.0	1139.5	55	B12	130	55	0	60	2	C25 -50
P13	19x19	2362.0	1141.0	40	B13	130	55	0	60	2	C25 -50
P14	19x19	2642.0	1141.0	40	B14	130	55	0	60	2	C25 -50
P15	19x19	0.0	1130.0	25	B15	55	55	0	60	1	C25 -50
P16	19x50	862.0	1084.5	50	B16	130	55	0	60	2	C25 -50
P17	19x19	2362.0	1002.5	25	B17	130	55	0	60	2	C25 -50
P18	19x19	2642.0	1002.5	30	B18	130	55	0	60	2	C25 -50
P19	19x50	3058.0	1002.5	30	B19	130	55	0	60	2	C25 -50
P20	19x50	0.0	967.5	35	B20	130	120	0	60	3	C25 -50
P21	19x50	2362.0	958.0	70	B21	130	120	0	60	3	C25 -50
P22	19x50	2502.0	958.0	25	B22	130	55	0	60	2	C25 -50
P23	19x50	2640.0	958.0	25	B23	130	55	0	60	2	C25 -50
P24	19x50	3041.0	958.0	25	B24	130	55	0	60	2	C25 -50
P25	19x50	2671.0	958.0	20	B25	130	55	0	60	2	C25 -50
P26	25x50	1850.0	971.0	125	B26	161	161	0	75	5	C25 -65
P27	25x50	1390.0	644.0	110	B27	161	161	0	75	5	C25 -65
P28	25x50	492.0	616.0	115	B28	161	161	0	75	5	C25 -65
P29	25x50	336.0	589.0	105	B29	130	130	0	60	4	C25 -50
P30	19x50	0.0	567.0	40	B30	130	120	0	60	3	C25 -50
P31	19x19	360.0	490.5	20	B31	55	55	0	60	2	C25 -50
P32	19x19	46.0	400.0	25	B32	130	55	0	60	2	C25 -50
P33	19x19	217.5	361.0	20	B33	130	55	0	60	2	C25 -50
P34	19x50	3004.5	280.0	25	B34	130	55	0	60	2	C25 -50
P35	19x19	2502.0	280.0	20	B35	130	55	0	60	2	C25 -50
P36	19x19	2840.0	280.0	20	B36	130	55	0	60	2	C25 -50
P37	19x19	2.0	243.5	25	B37	130	55	0	60	2	C25 -50
P38	19x19	349.0	236.0	20	B38	130	55	0	60	2	C25 -50
P39	19x19	130.0	193.5	15	B39	55	55	0	60	1	C25 -50
P40	19x50	892.0	150.0	50	B40	130	55	0	60	2	C25 -50
P41	19x50	1360.0	150.0	55	B41	130	55	0	60	2	C25 -50
P42	19x50	1890.0	150.0	60	B42	130	120	0	60	3	C25 -50
P43	19x19	2502.0	140.0	25	B43	130	55	0	60	2	C25 -50
P44	19x19	2840.0	140.0	20	B44	130	55	0	60	2	C25 -50
P45	19x19	394.5	87.5	20	B45	130	55	0	60	2	C25 -50
P46	19x19	225.5	14.0	25	B46	130	55	0	60	2	C25 -50
P47	19x50	410.5	0.0	25	B47	130	55	0	60	2	C25 -50
P48	19x50	653.5	0.0	25	B48	130	55	0	60	2	C25 -50
P49	19x50	1141.0	0.0	25	B49	130	55	0	60	2	C25 -50
P50	19x50	1640.0	0.0	25	B50	130	55	0	60	2	C25 -50
P51	19x50	2086.5	0.0	25	B51	130	55	0	60	2	C25 -50
P52	19x50	2346.5	0.0	35	B52	130	55	0	60	2	C25 -50
P53	19x19	2502.0	0.0	20	B53	130	55	0	60	2	C25 -50
P54	19x19	2840.0	0.0	20	B54	130	55	0	60	2	C25 -50
P55	19x19	2980.0	0.0	15	B55	55	55	0	60	1	C25 -50

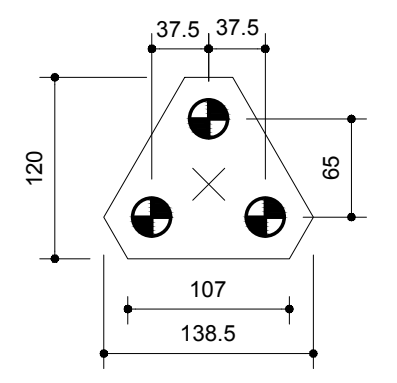
Simbologia	Estaca	Quantidade
	C25 25.00	126

Locação no eixo X			Locação no eixo Y		
Coordenadas (cm)	Nome		Coordenadas (cm)	Nome	
0.0	P16, P20, P30		1451.0	P1	
2.0	P37		1423.0	P2	
46.0	P32		1390.4	P3	
180.0	P39		1360.0	P4	
225.5	E2, P46		1310.5	P5	
227.5	P33		1255.0	P6	
340.0	P38		1205.5	P7	
360.0	P31		1195.0	P8	
389.5	P10		1175.0	P9	
395.0	P45		1173.5	P10	
396.0	P29		1156.5	P11	
410.5	P47		1141.0	P13, P14	
426.5	E1		1139.5	P12	
442.0	E4		1130.0	P15	
482.0	E5		1084.5	P16	
640.5	E3		1002.5	P17, P18, P19	
676.5	P7		978.5	E1	
683.5	P48		967.5	P20	
862.0	P16, P40		957.0	E2	
892.0	P28		863.0	E3	
1124.5	P6		841.0	E4	
1141.0	P49		688.0	P21, P22, P25, P23, P24	
1360.0	P12, P27, P41		672.0	P26	
1623.5	P6		644.0	P27	
1640.0	P50		616.5	P28	
1660.0	P6, P26, P42		589.0	P29	
2071.4	P4		567.0	P30	
2086.5	P51		490.5	P31	
2346.5	P52		400.0	P32	
2346.5	P3		366.0	E5	
2362.0	P13, P17, P21		361.5	P33	
2642.0	P2, P35, P43, P53		280.0	P35, P36, P34	
2671.0	P5		243.5	P37	
2840.0	P23, P38, P44, P54		236.5	P38	
2872.5	P9		193.5	P39	
2884.0	P1		150.0	P40, P41, P42	
2880.0	P55		140.0	P43, P44	
3044.5	P54		57.5	P45	
3041.0	P24		14.0	P46	
3068.0	P18		0.0	P47, P48, P49, P50, P51, P52, P53, P54, P55	
3081.5	P11				

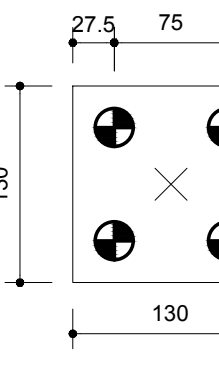
B1=B9+B11+B15+B39=B55
(1x C25)



B6=B10+B20+B21+B30+B42 (3x C25)



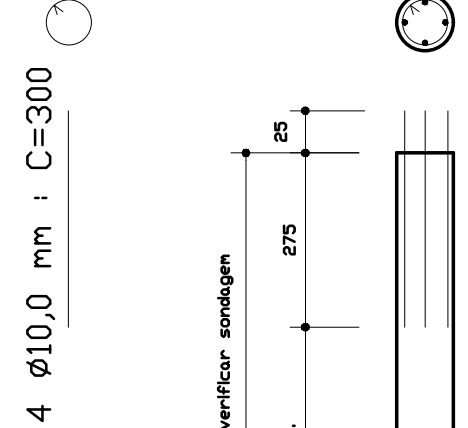
B2=B3+B4+B5+B6=B7+B12+B13+B14+B16+B17+B18
B19=B22=B23+B24+B25+B31+B32+B33+B34+B35
B36=B37+B38+B40+B41+B43+B44+B45+B46+B47
B48=B49+B50+B51+B52+B53+B54 (2x C25)



Legenda dos blocos
escala 1:50

DETALHE DA ESTACA (Ø25)

20 Ø5,0 mm C/15 : C=74



FUNDO DO BROCO

Obs.:
AS BROCAS DEVEREM SER
ARMADAS EM 2,75METROS

Resumo do aço - 126 estacas

ACO	DIAM (mm)	C.TOTAL (m)	PESO * 10 % (kg)
CA50	10.0	1512.0	1048
CA60	5.0	1864.8	329
PESO TOTAL (kg)			
CA60	329		
CASO	1048		

		PREFEITURA MUNICIPAL DE DIVINO - MG	
PROJETO ESTRUTURAL			
PREFEITURA MUNICIPAL DE DIVINO MG			
Planta de Locação Fundação			
CENTRO DE REFERENCIA DE EDUCAÇÃO E CULTURA			
CLÁUDIO DE MELO ROCHA CAURK 51 / 95-3			
ACQ: CA-50 e CA-60		CONCRETO: Fck = 25,0 Mpa	
VERSÃO: 1		DATA: 10/06/2022	
ARQUIVO: BASE GERAR C/C DIVINO MG		01/32	